



R&M CONSULTANTS, INC.
9101 Vanguard Drive, Anchorage, Alaska 99507

(907) 522-1707, FAX (907) 522-3403, www.rmconsult.com

August 22, 2012

R&M No. 1699.00

AWWU Engineering Division
3000 Arctic Blvd.
Anchorage, AK 99503-3898
Attn: Paul Hatcher, Real Estate Coordinator

RE: Term Contract AWWU 10-027, Land Surveying Services,
Tract B, Legacy Pointe (P2006-10) Plat Estimate

Dear Mr. Hatcher:

Following is R&M Consultants, Inc. (R&M) response to the August 17 email we received from you in which you request an estimate to subdivide Tract B into two tracts, a 3.61 acre tract and a remainder tract. Per our telephone conversation this must be done under the MOA standard plat procedure and will require a public hearing.

R&M will prepare a preliminary plat and perform the tasks necessary for approval, perform a boundary survey, set the required corner monuments and prepare and submit a final plat for recording.

Schedule: We are prepared to begin the preliminary plat tasks as soon as we receive an NTP. Field tasks will be completed before freeze up this fall. The final plat will be completed after we receive approval from the platting authority. Total estimated time from NTP to recording of the final plat is approximately 120-160 days.

Cost Estimate: Based on scope and our understanding of the project, we propose a Time-and-Materials Not To Exceed cost of \$45,562.00 for this project. We have attached a detailed breakdown of our cost for your review. If you wish to assist with some of the tasks needed for plat completion or will pay the MOA plat fees the cost may be reduced. If it appears we will exceed the estimated amount we will notify you immediately with written justification.

Should you have any questions or require additional information, please feel free to contact me at 646-9625.

Sincerely;
R&M CONSULTANTS, INC.

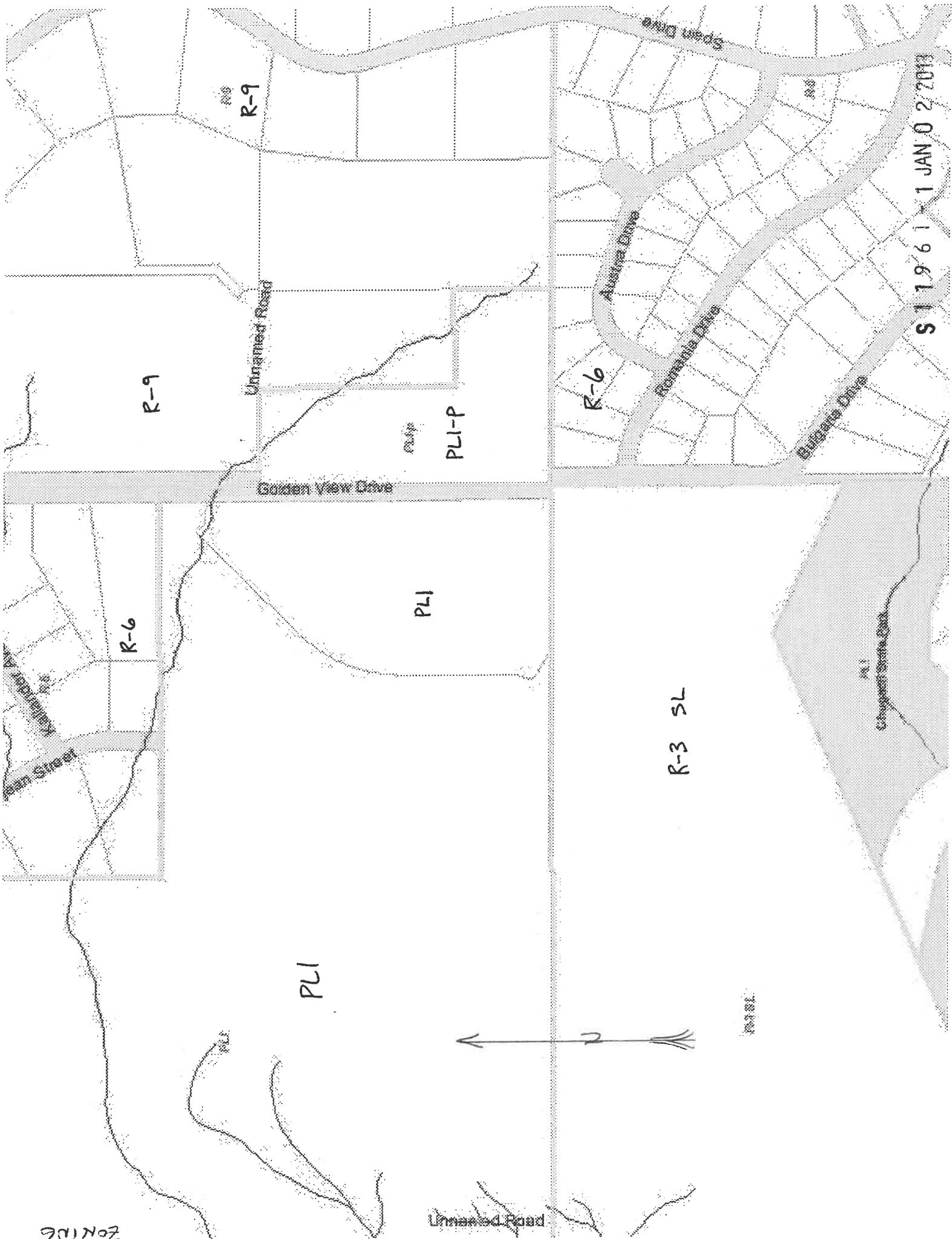
Bill Cohen, PLS
Senior Vice President

WDC:wdc

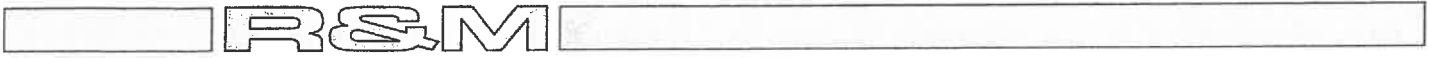
c: Dave Hale, PLS
Attachments: Cost Estimate

S 1 1 9 6 1 - 1 JAN 0 2 2013

ZONING



S 11 9 6 1 1 JAN 0 2 2013



R&M CONSULTANTS, INC.
9101 Vanguard Drive, Anchorage, Alaska 99507

(907) 522-1707, FAX (907) 522-3403, www.rmconsult.com

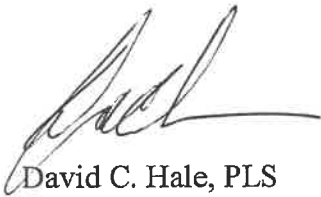
11-05-12

R&M No. 1699.21

Municipality of Anchorage
Planning Department
P.O. Box 196650
Anchorage, AK. 99519

RE: Proposed Tracts B-1 and B-2, Legacy Pointe Subdivision

I, David C. Hale, declare that this plat of Proposed Tracts B-1 and B-2, Legacy Point Subdivision, has been checked by me and to the best of my knowledge and ability complies with the zoning requirements of the Municipal Land Use Regulations, Title 21 for the PLI, Public Lands and Institutions, zoning district.



David C. Hale, PLS
R&M CONSULTANTS, INC.



Attachments: none

S 1 1 9 6 1 - 1 JAN 0 2 2013

McLaughlin, Francis D.

From: Smith, Alison L.
Sent: Thursday, December 27, 2012 1:08 PM
To: McLaughlin, Francis D.
Cc: Oswald, Tammy R.; Gaskill, Karlee A.
Subject: RE: AWWU water tank

The parcel (unsubdivided) is managed by HLB. We're selling a portion to AWWU for the future tank.

*Alison L. Smith
Land Manager
MOA, Real Estate Dept.
343-7531*

From: McLaughlin, Francis D.
Sent: Thursday, December 27, 2012 12:36 PM
To: Oswald, Tammy R.
Cc: Smith, Alison L.; Gaskill, Karlee A.
Subject: AWWU water tank

Hi Tammy,

Can you tell me who has admin control of parcel 020-181-62 off of Golden View Drive? It's the site of a prospective AWWU water tank.

Thanks,
Francis

Francis McLaughlin
Senior Planner
343-8003 phone
249-7801 fax